

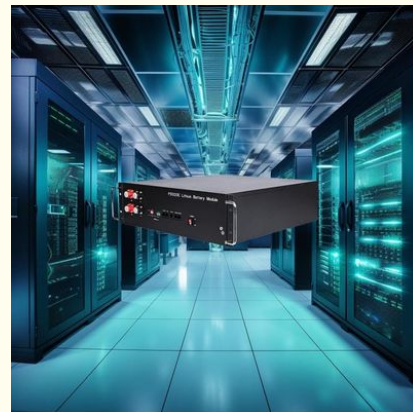


Industrial ESS Lithium Battery , 5.12Kwh 51.2V 100Ah Rackmount Lifepo4 Battery

Our Product Introduction

Basic Information

- Place of Origin: China
- Brand Name: XWELL
- Certification: UN38.3, MSDS, UL, CB, BIS, PSE, GB4943.1 safety standard, CE, FCC, ROHS, battery UN38.3, MSDS, UL, CB, BIS, PSE
- Model Number: XW-2560W-1
- Minimum Order Quantity: 1 pcs
- Packaging Details: Carton
- Delivery Time: 7-10 working days
- Payment Terms: L/C, D/A, D/P, T/T, Western Union, MoneyGram
- Supply Ability: 5000 pcs per month



Product Specification

- Working Voltage: 51.2V
- Capacity: 5.12kwh
- Cell: Prismatic Cell LiFePO4
- Max Working Current: 50A
- Standard Charge Voltage: 54.6V
- Max Charge Current: 50A
- Discharge Cut-off Voltage: 42.5V
- Display: LCD Optional
- Communication Interface: RS485, RS232, CAN
- Cycle Life: >6000 Cycles(80%DOD)
- Highlight: **ESS Lithium Battery 5.12Kwh,
ESS Lithium Battery 51.2V,
100Ah Rackmount Lifepo4 Battery**

for more products please visit us on esslithiumbattery.com

Product Description

5.12Kwh 51.2V 100Ah Cabinet Energy Storage Solar Telecom Lifepo4 Server Rack ESS Lithium Battery Rackmount Lifepo4

6 REASONS TO CHOOSE US

1. Long life 5000-6000 cycles
2. Safety, Environment Friendly, Pollution-free
3. Over discharge protection
4. Built in BMS battery protection & smarter
5. Fast charging Low self-discharge
6. 100% Depth of Discharge(DOD)

Features of ESS Lithium Battery

1. Digital Monitor System App
2. High Inverter Compacity
3. Reliable LFP Cells
4. Can Bus Standard Connection
5. Natural Cooling System
6. Scale Up the Engery by Parallel or Series
7. 10 Years Limited Warranty

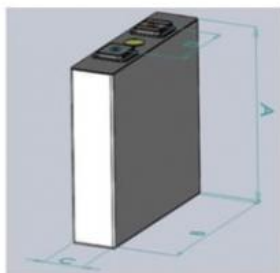
Application of ESS Lithium Battery

Forklift, communication base station, industrial energy storage, home energy storage,RV, Marine propeller, etc.

Industrial And Commercial Energy Storage System Specification

Model	51.2V50Ah	51.2V100Ah	51.2V200Ah
Nominal voltage	51.2V		
Nominal capacity (kwh)	2.56	5.12	10.24
Cell type	LiFePO4		
Standard charge voltage	54.6V(adjustable)		
Max charge current	50A		
Discharge cut-off voltage	42.5V(adjustable)		
Max discharge current	50A		
Display	LCD(Optional)		
Communication interface	CAN/RS485/RS232		
Cycle life	>6000 Cycles (80%DOD)		
Charge temperature range	0~45°C		
Discharge temperature range	-20~60°C		
Color	Black		
Dimension (mm)	442x410x133 3U	442x410x177 4U	550x442x220 5U
Weight	About 35Kg	About 42Kg	About 84Kg
Installation method	Rack Mount		

Cell Specification of ESS Lithium Battery

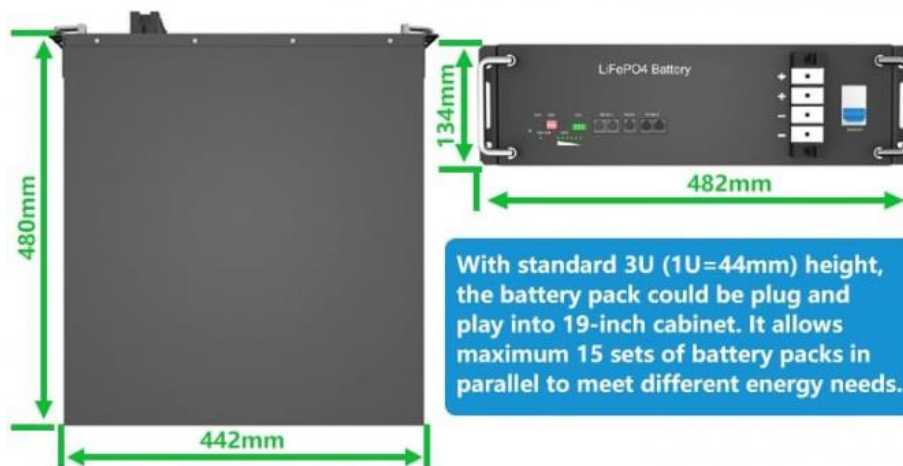


#	Item	Parameter
A	Height	119±1.0 mm
B	Width	160±1.0 mm
C	Thickness	≤50 mm
D	Tabs Distance	97±0.5 mm

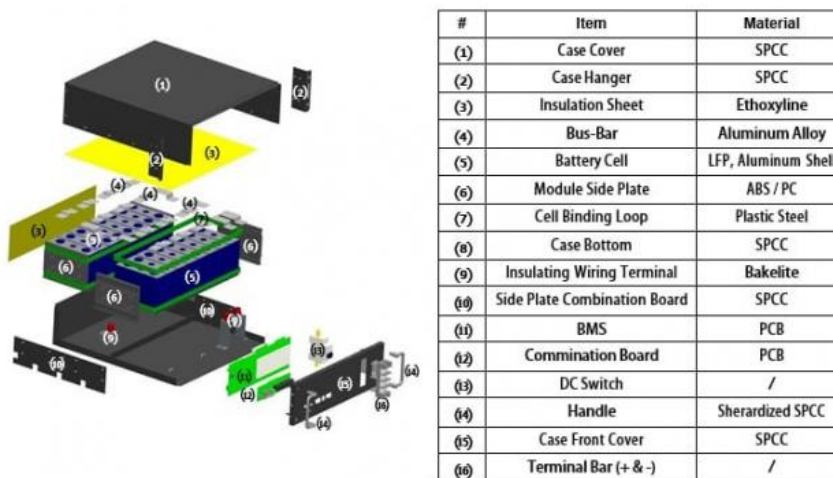
Operation Pannel of ESS Lithium Battery



Size of ESS Lithium Battery



Structure of ESS Lithium Battery



Application of ESS Lithium Battery

Application Scenario



Data Center



C&I Park



Telecom Base



Medical Equipment

Our services

1. Your inquiry related to our products price will be replied in 24 hours.
2. Experienced staffs to answer all your enquiries in fluent English
3. We make the OEM and ODM service for more than 5 years
4. Protection of your sales area, ideas of design and all your private information.
5. No matter big order or small order, we will provide all the best quality, best service.
6. If our products have any problem that we caused, they will be sent free in the next order.



XWELL GUANGDONG XWELL TECHNOLOGY CO., LTD.



+86 18620492985



sales@esslithiumbattery.com



esslithiumbattery.com

Room 322, Building 3, No. 801, Qiaoxing Avenue, Xiaoluo Village, Shatou Street, Panyu District, Guangzhou, China